

UNIVERSAL SUBMICRON HYBRID COMPOSITE

# BRILLIANT EverGlow<sup>®</sup>

Enduring gloss – made brilliant



**NEW**  
Improved tip!



## BRILLIANT RESULTS

With the universal composite BRILLIANT EverGlow highly aesthetic and long-lasting restorations can be achieved effortlessly.

It was developed with a special focus on aesthetics and user-friendliness. As such it excels through convenient handling, shades that blend in exceptionally well and high gloss qualities.

BRILLIANT EverGlow is not only easy to polish. Thanks to increased abrasion resistance and enhanced gloss retention, it also supports brilliant long-term results.

- Exceptional polishability and long-lasting brilliance
- Aesthetic single-shade restorations
- Versatile shade system with three translucency levels
- Excellent sculptability and smooth consistency
- Good wettability with minimal stickiness to the instrument

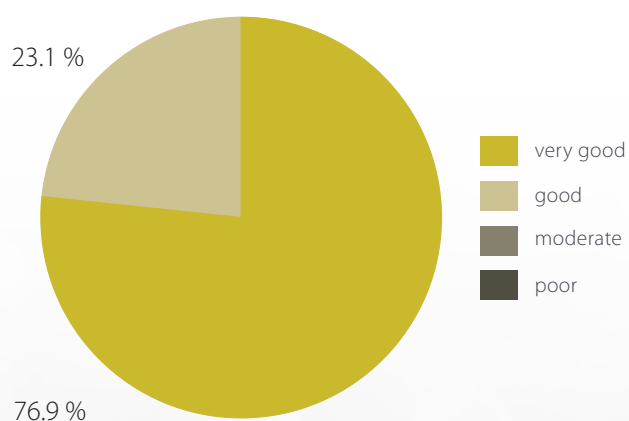


# EXCEPTIONAL POLISHABILITY AND LONG-LASTING BRILLIANCE

## FILLER COMPOSITION FOCUSES ON GLOSS

Thanks to its submicron filler composition, BRILLIANT EverGlow immediately shows an exceptionally smooth surface and satin shine directly after placing the filling. This simplifies polishing, allowing highly aesthetic restorations to be performed in next to no time. Also in the longer run BRILLIANT EverGlow convinces with its pronounced gloss retention.

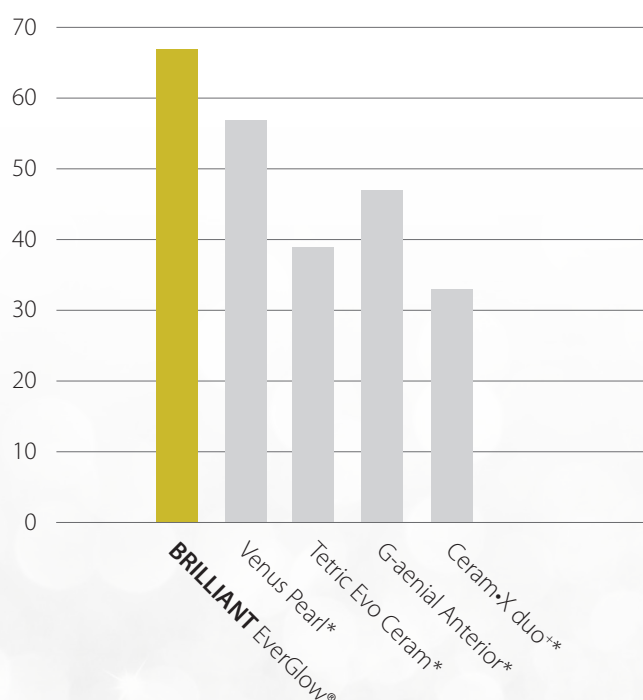
## EVALUATION OF POLISHABILITY <sup>1</sup>



Good polishability has been confirmed by dentists. In a survey among 39 dentists in Europe and the USA, **100%** of dentists gave a positive score. 76.9 % even rated the best possible score.

## GLOSS RETENTION <sup>1</sup>

After exposure in the toothbrush simulator, measured in gloss units (GU)



Even after loading with more than 20,000 brushing movements in a toothbrush simulator, BRILLIANT EverGlow retains a high gloss level.

<sup>1</sup> Source: internal data | \* not a trademark of COLTENE

# AESTHETIC SINGLE-SHADE RESTORATIONS WITH UNIVERSAL SHADES

## COLTENE IS AN INNOVATOR IN SHADE AESTHETICS

BRILLIANT EverGlow offers universal shades in the proven Duo Shade system invented by COLTENE. Duo Shades simplify shade management by combining two VITA\* shades into a single shade (for example, A1/B1 or A2/B2). This is made possible by the optical properties of Duo Shades, which allow them to blend in harmoniously with adjacent teeth.

\*VITA is not a trademark of Coltène/Whaledent



### Clinical Case using A3/D3 only

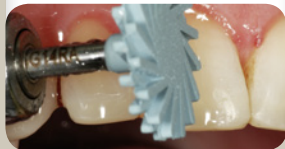
Initial situation



Treatment



Treatment



Final result



READ THIS USER REPORT  
OF DR. MED.DENT. MARKUS  
LENHARD AND MORE USER  
REPORTS

[everglow.coltene.com/lit/en](http://everglow.coltene.com/lit/en)

For BRILLIANT EverGlow the Duo Shade concept has been brought to the next level: The universal shades. Through the use of a single universal shade seamless single-shade restorations can be realized, eliminating the need to add a translucent enamel material. Achieving high aesthetics has never been more simple.



## 7 UNIVERSAL SHADES

- VITA\* based «Duo Shades»
- For anterior and posterior fillings
- For aesthetic single-shade restorations
- For dentin replacement in multi-shade restorations



# THE FLEXIBLE SHADE SYSTEM FOR EVEN THE MOST COMPLEX OF CASES

In addition to the universal shades, five supplementary shades are available for customising with the shade layering technique. This allows for a harmonious result in even the most complex of cases.

The translucent shades imitate particularly pronounced enamel areas whereas the three opaque shades lay the foundation for discoloured teeth or amalgam tattoos.



Single-shade  
restorations



Universal shade +  
translucent covering layer



Opaque shade +  
universal shade



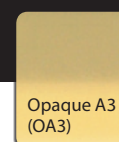
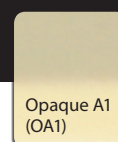
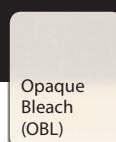
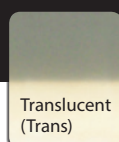
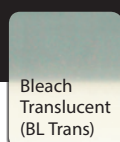
Opaque shade +  
universal shade +  
translucent covering layer



RECOMMENDATIONS ON  
SHADE COMBINATIONS



[everglow.coltene.com/tips/en](http://everglow.coltene.com/tips/en)



## 2 TRANSLUCENT SHADES

- For the individual characterisation of particularly translucent enamel

## 3 OPAQUE SHADES

- For masking chroma deviations and amalgam tattoos

# EXCELLENT SCULPTABILITY AND SMOOTH CONSISTENCY

«BRILLIANT EverGlow is one of my go to composites, it's simple to use, easy to handle and produces an excellent polish everytime.»

Dr Monik Vasant  
BChD MFGDP MSc



Its smooth consistency and dimensional stability make the state-of-the-art filling material BRILLIANT EverGlow easy and convenient to apply in cavities. Elaborately modelled cusps, ledges and contact points remain intact and do not start to deform. High resistance to the operating light and a low stickiness paired with a good wettability round off the convenient handling.

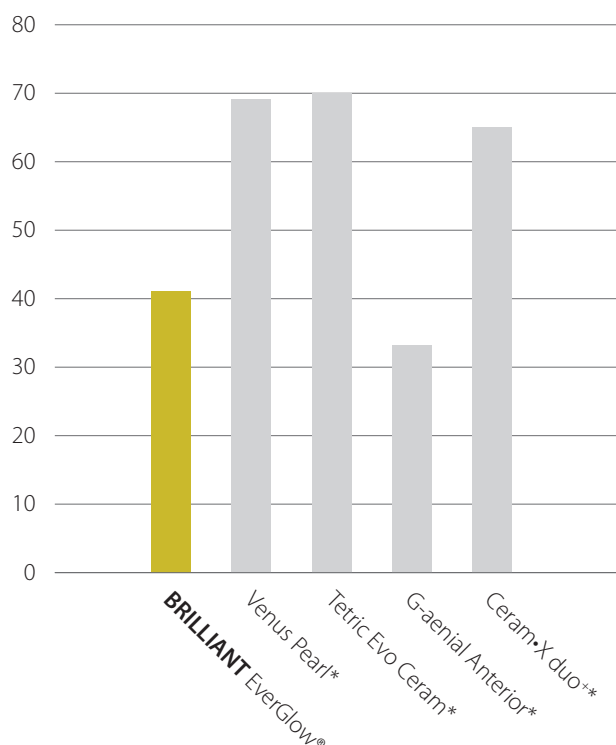
The smooth consistency and excellent wettability of BRILLIANT EverGlow make it ideal for luting indirect restorations such as BRILLIANT COMPONEER, the Direct Composite Veneering System by COLTENE.



BRILLIANT COMPONEER Direct Veneering System

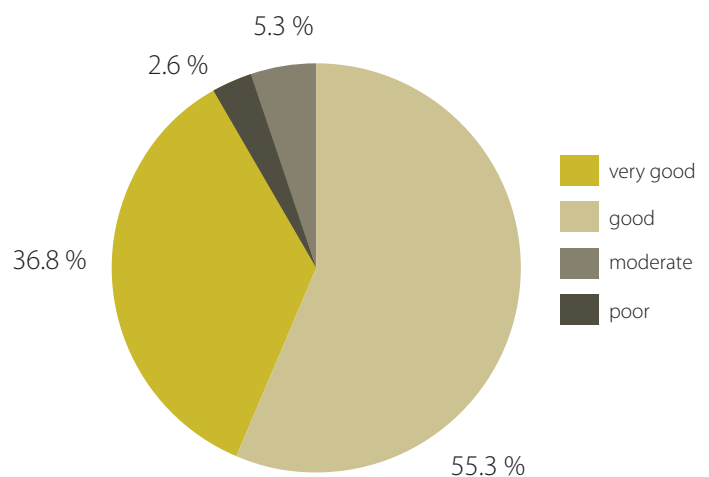
## STICKINESS TO THE INSTRUMENT <sup>1</sup>

Measured in Newtons



Due to its good wettability, BRILLIANT EverGlow offers excellent adhesion to bonded tooth surfaces rather than sticking to the instruments. This has also been confirmed in an international user survey: over 90 % of participants rated the wetting properties as being «very good» or «good».

## WETTABILITY AT BOND <sup>1</sup>



# THE KEY TO BRILLIANT RESTORATIONS



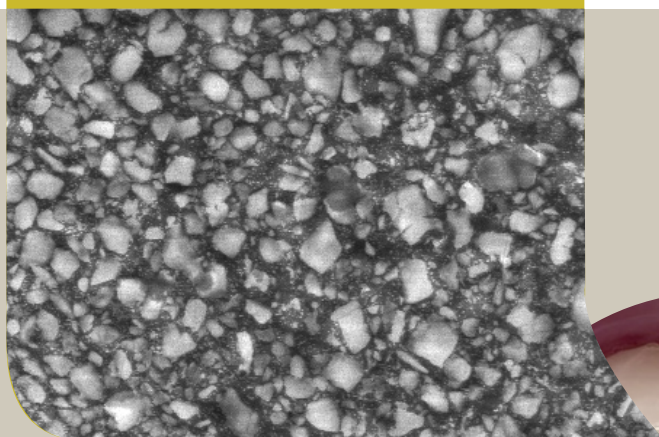
[everglow.coltene.com/guide/en](https://everglow.coltene.com/guide/en)

## BRILLIANT EVERGLOW FILLER TECHNOLOGY

BRILLIANT EverGlow's filler technology is engineered to provide an ideal combination of long-lasting aesthetics, handling convenience and mechanical strength. Submicron glass fillers support excellent polishability and gloss retention. Additional pre-polymerized fillers, which have the same composition as the uncured composite, lower volume shrinkage and improve the sculpting properties of the paste. Filler surfaces are specially treated to ensure optimal compound strength within the resin matrix. These characteristics provide the ideal preconditions for the excellent polishability and gloss retention of BRILLIANT EverGlow. The result is a state-of-the-art composite that allows for «brilliant» restorations.

## SIMPLY IMPRESSIVE

SEM image of BRILLIANT EverGlow

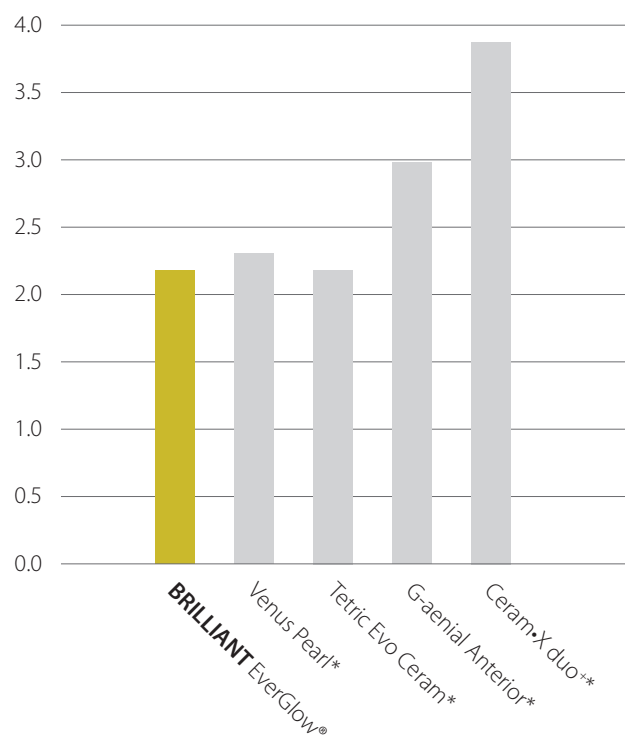


## STUDY COLLECTION AND MORE

Find out more about the technical data and measurement results versus the competition in the Product Guideline.

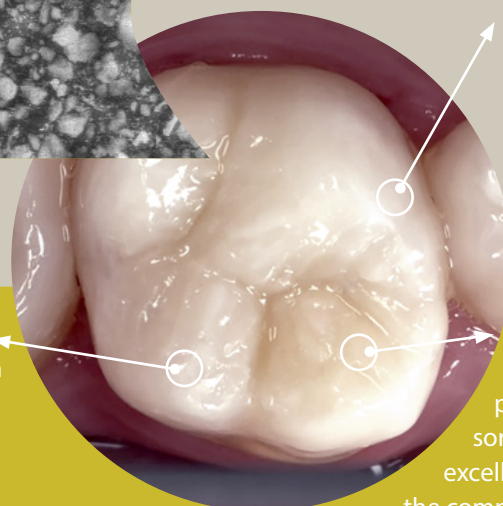
### MINIMAL ABRASION <sup>1</sup>

Compared with other conventional composites, BRILLIANT EverGlow demonstrates significantly lower abrasion values.



### HIGH COMPRESSIVE STRENGTH

Ideal for restorations of posterior teeth due to high resistance to masticatory forces.



### LOW WATER SORPTION

The optimised monomer composition leads to lower water sorption, which in turn supports excellent long-term colour stability of the composite.

<sup>1</sup> Source: internal data | \* not a trademark of COLTENE

# BRILLIANT EVERGLOW FLOW

## THE IDEAL COMPLEMENT

The BRILLIANT EverGlow submicron hybrid composite is also available in a flowable consistency. Apart from the aesthetic properties of the material, special focus was also given to optimal handling properties.



*«It flows  
but it doesn't  
flow away!»*

Dr. med. dent. Christoph G.  
Hüsken, Switzerland

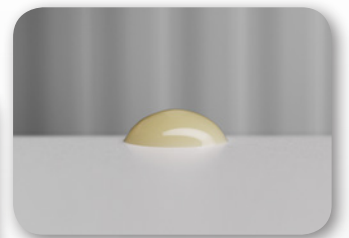
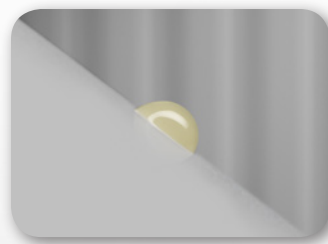
## HIGHLY STABLE, YET VERY FLOWABLE

With BRILLIANT EverGlow Flow excellent stability and good flowability are no longer a contradiction. BRILLIANT EverGlow Flow manages to combine these properties in a single material which makes it extremely versatile to use.

With its high stability and perfect thixotropic property, BRILLIANT EverGlow Flow can be applied with absolute precision in a controlled and easy manner.

*«The thixotropy is perfect which  
is an important feature! Excellent  
application without smudging  
and running. The material can be  
moved to where it should be and  
remains there for long enough to  
provide ample time for applying  
the polymerisation light.»*

Dr. med. dent. Ralph Schöнемann,  
Germany



Initial stability





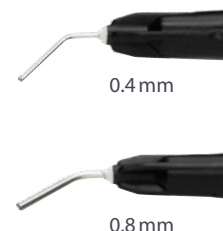
While the controlled flow behaviour facilitates focused work, the low viscosity of the material provides good

wetting which, for example, is important in the case of cavity linings and small fillings.



## TWO APPLICATION NEEDLE SIZES FOR MULTIPLE INDICATIONS

Every BRILLIANT EverGlow Flow syringe comes with two application needle sizes. In addition to the standard size with an inner diameter of 0.8 mm, the accessories provided have been extended by a fine size. With only 0.4 mm inner diameter it allows for highest application precision.



## FUNCTIONAL SHADE CONCEPT – INCLUDING OPAQUE SHADE



BRILLIANT EverGlow Flow comes with all the quality characteristics of the BRILLIANT EverGlow filler technology, such as polishability and gloss retention. The shade assortment has also been adopted and offers the convenient Duo Shades and three translucency levels.

Although the universal and translucent shades serve most cases, dark areas and chroma deviations can negatively affect the final aesthetic outcome of a restoration and demand for an opaque cavity lining. The «Opaque A2» shade was developed to suit this need by creating the basis for an harmoniously shaded and aesthetic restoration.

As a result, BRILLIANT EverGlow Flow delivers convincing aesthetic outcomes and is the perfect partner for the universal composite BRILLIANT EverGlow.



## ORDER INFORMATION

# BRILLIANT EverGlow

BRILLIANT EverGlow Kits	Opaque shades			Universal shades							Translucent shades	
	Opaque Bleach (OBL)	Opaque A1 (OA1)	Opaque A3 (OA3)	Bleach (BL)	A1 / B1	A2 / B2	A3 / D3	A3.5 / B3	C2 / C3	A4 / C4	Bleach Translucent (BL Trans)	Translucent (Trans)
<b>Trial Kits</b>												
60019720   4 syringes à 3g						1	1	1				1
60019721   32 tips à 0.2g						8	8	8				8
<b>System Kits</b>												
60019722   9 syringes à 3g				1	1	1	1	1	1	1	1	1
60019723   60 tips à 0.2g				5	8	8	8	8	5	5	5	8
<b>Regular Kits</b>												
60019726   9 syringes à 3g		1	1		1	1	2	1	1			1
60019727   60 tips à 0.2g		5	5		5	10	12	10	5			8

Kit accessories: instructions for use, mixing pad, shade guide

## REFILLS

### BRILLIANT EverGlow Refills tips (20 × 0,2 g)

- 60019746 Opaque Bleach (OBL)
- 60019747 Opaque A1 (OA1)
- 60019748 Opaque A3 (OA3)
- 60019706 Bleach (BL)
- 60019707 A1 / B1
- 60019708 A2 / B2
- 60019709 A3 / D3
- 60019710 A3.5 / B3
- 60019716 C2 / C3
- 60019717 A4 / C4
- 60019718 Translucent (Trans)
- 60019719 Bleach Translucent (BL Trans)



### BRILLIANT EverGlow Refills syringes (1 × 3 g)

- 60019743 Opaque Bleach (OBL)
- 60019744 Opaque A1 (OA1)
- 60019745 Opaque A3 (OA3)
- 60019697 Bleach (BL)
- 60019698 A1 / B1
- 60019699 A2 / B2
- 60019700 A3 / D3
- 60019701 A3.5 / B3
- 60019702 C2 / C3
- 60019703 A4 / C4
- 60019704 Translucent (Trans)
- 60019705 Bleach Translucent (BL Trans)



## ACCESSORIES

- 60021919 BRILLIANT EverGlow Shade Guide
- 60022485 Composite Tip Dispenser



# BRILLIANT EverGlow Flow

BRILLIANT EverGlow Flow Intro Kit	Opaque A2 (OA2)	Bleach (BL)	A1 / B1	A2 / B2	A3 / D3	A3.5 / B3	A4 / C4	Translucent (Trans)
60019760   4 syringes à 2g			1	1	1	1		

Kit accessories: instructions for use, mixing pad, 40 application needles

## REFILLS

### BRILLIANT EverGlow Flow Refills (1 × 2 g + 10 application needles)

- 60019751 Opaque A2 (OA2)
- 60019752 Bleach (BL)
- 60019753 A1 / B1
- 60019754 A2 / B2
- 60019755 A3 / D3
- 60019756 A3.5 / B3
- 60019757 A4 / C4
- 60019758 Translucent (Trans)

- 8469 20 application needles Standard (Ø 0.8mm)
- 60022137 20 application needles Fine (Ø 0.4mm)



## COMPLEMENTARY PRODUCTS

### ONE COAT 7 UNIVERSAL

Light curing single-component bond for adhesive luting with the self-etch, total etch or selective etch technique.

- 60019538 ONE COAT 7 UNIVERSAL Intro Kit

### BRILLIANT COMPONEER

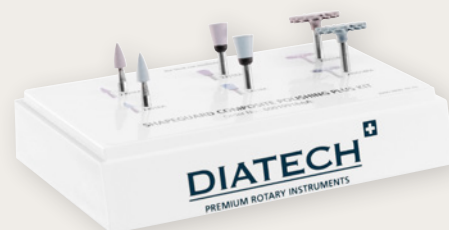
Prefabricated composite shells for anterior tooth restoration. The veneers based on the filler technology of BRILLIANT EverGlow are available in the shades Translucent and Bleach Translucent.

- 60023214 BRILLIANT COMPONEER Intro Kit Syringes
- 60023215 BRILLIANT COMPONEER Intro Kit Tips

### DIATECH ShapeGuard

Silicone polisher for pre-polishing (purple) and high gloss polishing (blue) of composite restorations. Due to its flexible lamellae, the DIATECH ShapeGuard adapts to the surface structure.

- 60019916 ShapeGuard Composite Polishing Plus Kit



«I was massively impressed with COLTENE BRILLIANT EverGlow's performance. It does not stick to your instruments and this as well as it's obedience to packing movements of the operator ensure it will reliably adapt to the cavity form. Thereafter you have the aesthetics which are stunning - it does not demand a complex finishing protocol and you will achieve a smooth glossy, natural end result. It has excellent shade adaptation and I cannot recommend it enough to the armamentarium of any dentist.»

Dr. Nalin Karunaratne, United Kingdom



«As an opinion leader of many dental companies, I had the opportunity to work and to test various composites. With BRILLIANT EverGlow, it was «love at first sight». It is very easy to match the colour and to hide margin preparations, despite the use of a reduced number of shades, and to achieve predictable and high quality results every day – both from an aesthetic and clinical point of view. »

Dr. Monaldo Saracinelli,  
Style Italiano group, Italy



LINK TO THE BRILLIANT  
EVERGLOW PRODUCT VIDEO



LINK TO USER REPORTS



LINK TO FURTHER TECHNICAL  
INFORMATION



everglow.coltene.com/  
mov/en



everglow.coltene.  
com/lit/



everglow.coltene.com/  
guide/en

© 2018 Coltène/Whaledent AG - www.coltene.com

**Coltène/Whaledent Ltd.**  
The President Suite  
Kendal House, Victoria Way  
Burgess Hill, West Sussex  
RH15 9NF / UK  
T +44 1444 235486  
F +44 1444 870640  
info.uk@coltene.com

**Coltène/Whaledent AG**  
Feldwiesenstr. 20  
9450 Altstätten / Switzerland  
T +41 71 757 53 00  
F +41 71 757 53 01  
info.ch@coltene.com

**Coltène/Whaledent Inc.**  
235 Ascot Parkway  
Cuyahoga Falls, Ohio 44223 / USA  
T +1 330 916 8800  
F +1 330 916 7077  
info.us@coltene.com

**COLTENE**